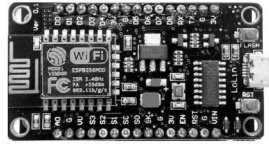


NodeMCU1.0(ESP-12E)



1	A0(ADC0)	D0(GPIO16)	30	SCL
2	RSV	D1(GPIO5)	29	SDA
3	RSV	D2(GPIO4)	28	
4	SD3(GPIO10)	D3(GPIO0)	27	
5	SD2(GPIO9)	D4(GPIO2)	26	
6	SD1(MOSI)		25	3.3 V
7	CMD(CS)		24	
8	SD0(MISO)	D5(GPIO14)	23	
9	CLK(SCLK)	D6(GPIO12)	22	
10	GND	D7(GPIO13)	21	
11	3.3V	D8(GPIO15)	20	
12	EN	RX(DPIO3)	19	
13	RST	TX(GPIO1)	18	
14	GND		17	
15	VIN		16	

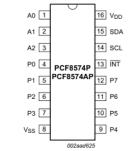
8 Vdc measurement
TP1

Step up DC-DC converter Vout 8 V

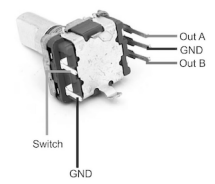
Micro USB 5V 1A 18650 Lithium Battery Charger Board

18650 Li-Ion battery

A0	A1	A2	Address Pins
0	0	0	= 0x20
0	0	1	= 0x21
0	1	0	= 0x22
0	1	1	= 0x23
1	0	0	= 0x24
1	0	1	= 0x25
1	1	0	= 0x26
1	1	1	= 0x27



Encoder Multi



- PF 1
- PF 2
- PF 3
- PF 4

- Encoder active on Vfo A
- Encoder active on Vfo B
- Encoder active on PF1
- Encoder active on PF2
- Encoder active on PF3
- Encoder active on PF4